

[August 4, 2023]

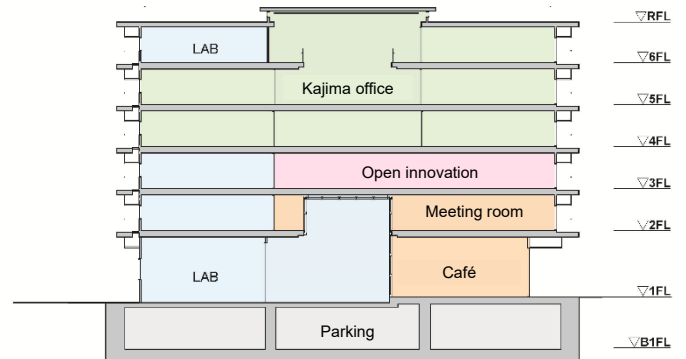
## Kajima Opens Headquarters, The GEAR, in Singapore

On August 4, Kajima (President Hiromasa Amano) opened The GEAR (Kajima Lab for Global Engineering, Architecture & Real Estate), which Kajima had been developing as its regional headquarters, opened in the Republic of Singapore.

The GEAR serves as Kajima's Asian head office, R&D center, and open innovation hub. Construction began in August 2020 in Changi Business Park near Changi Airport and was completed on March 31, 2023.



Exterior of The GEAR



Floor cross-section

### (1) Asian head office

The space will serve as a diverse office environment for employees to improve productivity and drive innovation, with various indoor, outdoor and semi-outdoor workplaces. Each office area is monitored with sensing devices such as AI cameras and indoor air quality sensors so that the office can serve as a testbed office to collect office environment data.

### (2) R&D center

Kajima Technical Research Institute's Singapore office Kajima Technical Research Institute Singapore (KaTRIS) will open five research labs (\*) to use the space as an R&D center to drive new technological development.

### (3) Open innovation hub

The hub will drive open innovations in collaboration with open innovation partners such as startups and universities. One floor will be used as an open innovation floor and available to open innovation partners, and as an incubation office with the hope of exploring and creating new businesses through interactions with employees.

Going forward, the Kajima Group will drive technological innovation and create added value through R&D and open innovations at The GEAR.

\*Overview of the research facility Lab

Lab name	Use
Construction Robotics Lab	The lab develops automated construction technology. It aims not only to digitalize individual operations at job sites but to optimize the entire construction process.
Digital Tech Lab	The lab collects and analyzes data with IoT and AI technologies and develops solutions to bring about smart buildings and smart cities.
Environmental Engineering Lab	The lab conducts assessment tests of methane fermentation and anammox reactions with local ingredients, and greening research using local soils and plants.
Human Centric Design Lab	The lab reproduces various indoor environments and develops technologies concerning habitability and energy savings. It also utilizes digital technologies to assess the validity of virtual spaces.
Urban Space Creation Lab	The lab develops visualization and analytical technologies for construction materials that reduce environmental impact, and structures that accommodate local ground composition and materials.

[Building profile]

Location: 19 Changi Business Park Crescent, Singapore 489690  
 Use: Offices and research facilities  
 Total floor size: 13,061.17 m<sup>2</sup>  
 Structure: Reinforced concrete  
 Designed by: Kajima Corporation, Architectural Design Division  
 Builder: Kajima Overseas Asia (Singapore) Pte. Ltd.  
 Completed: March 2023