

Corporate History

In 2009, Kajima Corporation celebrated its 170th anniversary.

From the historic Edo period to today, Kajima has played a vital role in developing the social capital essential to Japan's industrial and economic advancement, and an improved standard of living for its citizens. Naturally, times have not always been generous, and countless challenges have arisen over the years. To face them, our predecessors pooled their knowledge and strengths to anticipate the needs of the era, turning the tables on adversity to embark on a bold wave of management innovation.

The key to Kajima's ongoing development is a bold and vigorous enterprising spirit that runs through the veins of our managers and employees. Our corporate philosophy is "As a group of individuals working together as one, we pursue creative progress and development founded on both rational, scientific principles and a humanitarian outlook, through which we strive to continually advance our business operations and contribute to society." While times may change, our unyielding commitment to this philosophy never will.



1800s



1860 Ei-Ichiban Kan



1880 Began construction of Yanagase Railroad

[JAPAN]

- 1860 Ei-Ichiban Kan
- 1872 Houraisha Office
- 1874 Papermaking Company (Oji Paper) Factory
- 1878 Okayama Prefectural Office
- 1880 Began construction of Yanagase Railroad
- 1891 Began construction of Usui Railway Line



1872 Houraisha Office



1874 Papermaking Company (Oji Paper) Factory



1878 Okayama Prefectural Office

[OVERSEAS]

- 1899 Built railroads in Taiwan, Korea, etc.



1899 Built railroads in Taiwan, Korea, etc.

1900-1959



1918 Began construction of Tanna Tunnel (17-year project)



1924 Ohmine Dam

- 1918 Began construction of Tanna Tunnel (17-year project)
- 1924 Ohmine Dam
- 1934 Ueno Station
- 1957 No.1 Reactor, Japan Nuclear Power Research Center
- 1957 Ogouchi Dam



1934 Ueno Station



1957 No.1 Reactor, Japan Nuclear Power Research Center



1957 Ogouchi Dam

1960-1969

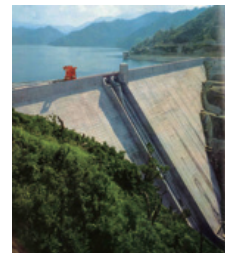


1963 New Tanna Tunnel



1968 Kasumigaseki Building

- 1960 Yamashina construction zone on the Meishin Expressway
- 1961 Okutadami Dam
- 1962 Tobata Iron Mill, Yawata Iron and Steel Co., Ltd.
- 1963 New Tanna Tunnel
- 1964 Komazawa Olympic Gymnasium
- 1968 Kasumigaseki Building
- 1968 Keiyo Sea Berth
- 1969 Nagawado Arch Dam, Azumi Power Plant



1961 Okutadami Dam



1962 Tobata Iron Mill, Yawata Iron and Steel Co., Ltd.



1964 Komazawa Olympic Gymnasium

- 1960 Baluchaung Hydroelectric Power Plant, former Burma
- 1965 Karang-Kates Dams, Indonesia
- 1965 Jurong Shipyard Docks, Singapore



1960 Baluchaung Hydroelectric Power Plant, former Burma

1970-1979



1974 Shinjuku Mitsui Building,
Sumitomo Shinjuku
Building, KDDI Building



1974 Supreme Court Building

[JAPAN]

- 1971 Keio Plaza Hotel
- 1972 MHI Kouyagichou Dock
- 1974 Shinjuku Mitsui Building,
Sumitomo Shinjuku Building,
KDDI Building
- 1974 Supreme Court Building
- 1978 Sunshine 60 Building



1971 Keio Plaza Hotel



1972 MHI Kouyagichou Dock



1978 Sunshine 60 Building

1980-1989



1984 Kokugikan Sumo Arena



1988 Honshu-Shikoku Bridge

- 1984 Kokugikan Sumo Arena
- 1986 ARK Hills
- 1988 Seikan Tunnel
- 1988 Honshu-Shikoku Bridge
- 1989 Kajima KI Building



1986 ARK Hills



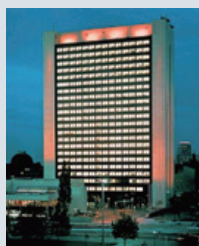
1988 Seikan Tunnel



1989 Kajima KI Building

[OVERSEAS]

- 1978 International Trade Center,
former East Germany



1978 International Trade Center, former
East Germany

- 1982 Jeddah Royal State Palace,
Saudi Arabia
- 1982 Asahan Sigura-gura Power
Plant, Indonesia
- 1987 Mazda Detroit Plant, USA
- 1987 Grand Hotel Berlin, former
East Germany



1987 Mazda Detroit Plant, USA

1990-1999



1997 Tokyo Wan Aqua-Line



1998 Akashi Kaikyo Bridge

■ Real estate development project (year of construction completed)

- 1992 Tokyo East 21
- 1993 Tennozu Isle, Seafort Square
- 1994 Shinjuku Park Tower
- 1994 Yebisu Garden Place
- 1994 Kansai International Airport
- 1996 Fuji Television Head Office
- 1996 Nagano Olympic Memorial Arena
- 1997 Tokyo Wan Aqua-Line
- 1997 Miyagase Dam
- 1998 Akashi Kaikyo Bridge



1994 Shinjuku Park Tower



1996 Fuji Television Head Office



1997 Miyagase Dam

- 1990 Stockley Park, UK
- 1995 Hotel Nikko Kuala Lumpur, Malaysia
- 1996 Senayan Square, Indonesia (Office Tower I, II and Plaza Senayan)
- 1996 Hualalai Resort, Hawaii
- 1997 Millenia Singapore



1997 Millenia Singapore

2000-



2005 Akihabara Crossfield



2010 D-Runway, Tokyo International Airport

- 2000 Daikanyama Address
- 2001 Saitama Stadium 2002
- 2003 Shiodome Tower
- 2003 Roppongi Hills Mori Tower
- 2004 Hakkoda Tunnel
- 2005 Akihabara Crossfield
- 2006 Toranomon Towers Residence & Office
- 2006 The National Art Center
- 2007 GranTokyo North Tower
- 2007 GranTokyo South Tower
- 2007 Kajima Head Office and Kajima Akasaka Annex
- 2010 D-Runway, Tokyo International Airport
- 2010 Metropolitan Expressway, Central Circular Shinjuku Route, Yamate Tunnel
- 2011 AKASAKA K-TOWER



2003 Roppongi Hills Mori Tower

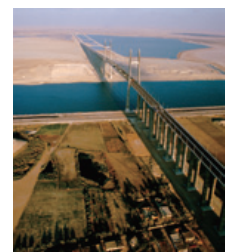


2004 Hakkoda Tunnel



2007 Kajima Head Office

- 2000 Ambassador Hotel Hsinchu, Taiwan
- 2000 AT&T Park, San Francisco, USA
- 2001 The Suez Canal Bridge, Egypt
- 2005 Treasure Palace (Condominium), Taiwan
- 2006 Began construction of Algeria East-West Motorway
- 2010 Resorts World Sentosa, Singapore



2001 The Suez Canal Bridge, Egypt