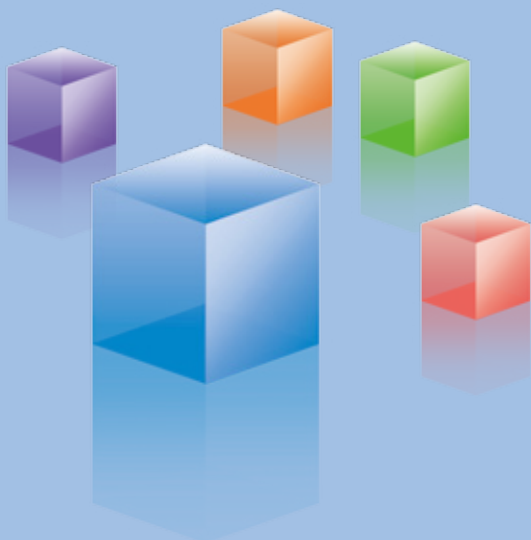


Working Together with Local Communities

The construction industry cannot operate effectively without the acceptance and cooperation of local communities, especially in neighborhoods where construction is undertaken. Moreover, in a country prone to earthquakes and other natural disasters, Japanese construction companies are expected, as part of their corporate social responsibility, to take proactive measures in preparation for a serious natural disaster.



CONTENTS

As a Member of the Local Community 39

Supporting Education and Academic Research through Community Service Foundations 43

As a Member of the Local Community

Kajima has some 1,700 business locations nationwide in Japan. In most cases, the Head Office, branch offices, and sales offices have existed at the same location for many years, while the construction site office for each project exists temporarily until the completion of a building or structure. While these temporary offices exist only during a very short period of time in comparison to the buildings or structures that will continue to last upon their completion, Kajima is striving for these offices to blend in with the local community within the time frame they are used.

Preserving the Safety and Security of the Local Community

Work at construction sites takes place among neighboring residences, offices and schools. As part of the local community, each of our construction sites makes efforts to ensure the safety and security of the surrounding environment.

Cleaning up areas surrounding construction sites
Although most construction worksites are not known for comfortable working conditions, at Kajima sites, offices and rest areas for employees are standard. And our effort does not stop at improving worksite environments. Conservation and improvement activities extend to the local surroundings as well.



Monthly cleanup activities including all construction team members



Decorating worksites with flowerbeds in front of transparent safety fences



Ensuring Compliance

Being a Company that People Are Proud to Work For

Providing Innovative Solutions for a Better Environment

Working Together with Local Communities

Communicating with Stakeholders

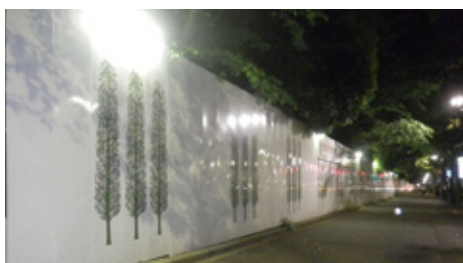
Safety of those in the community

Kajima strives to minimize the impact of construction work on the surrounding community. A construction project is implemented with guidance from the local police and fire department, while coordination also takes place with local authorities.

A construction site is frequented by many large vehicles, such as heavy machinery and trucks, especially during the time right before and after the day's work. This time frame usually overlaps with the morning rush hour for local residents commuting to school and work. As such, we have signed agreements based on prior discussions with the local community in which we promise to abide by predetermined access routes, coordinate the time of our work schedule and direct vehicle as well as pedestrian traffic in the surrounding area. By displaying safety and disaster prevention slogans using our safety fences, we stand fully committed to the safety of the local community as well as working with local authorities and organizations.



Ensuring a safe commute for elementary students through safety patrols every morning from the start of construction



Providing peace of mind to the surrounding community with safety fence and construction zone lighting

Landscaping that blends in with the local community

Safety fence enclosures mark the premises of a construction site. But rather than letting these be a boundary between the work zone and the surrounding community, Kajima prefers to use the fence as a means for forming connections with the local community by posting site information and decorating it with artwork.



Art created by local artists displayed on the safety fence enclosure contributes to uniformity between the worksite and the surrounding community (during the Christmas holiday season, decorative lights are displayed to add to the holiday flair)

Providing updates on the construction schedule and progress

A number of efforts are made to convey updates on the current progress and schedule in order for the construction site to be considered a part of the local community. In addition to posting the weekly schedule on the safety fence enclosure, we have launched a microsite for some worksites to provide real time information, or sent out newsletters to provide updates on their work on a regular basis. Related information: p. 46



Regular newsletter shares information on the progress of construction at the Hakodate Rail Yard Site with local residents, authorities and government organizations (the same contents are displayed on an enlarged billboard along roads in the vicinity)

Making Construction Sites Feel Closer to Home

When a building or structure is completed, its very existence is taken for granted. Kajima has offered opportunities throughout Japan for local residents to acquire a firsthand knowledge of the building construction process before completion, which not only instills a sense of familiarity with these buildings but also allows more users to better understand the construction industry to which they otherwise have little exposure.



2 Akita University Hospital Building Improvement Project (Akita Prefecture)

Four students from the Department of Civil and Environmental Engineering, Akita National College of Technology, worked at the construction site for five days in late August 2010 as part of an internship. This work experience provided interns with an insight into the basics of the construction industry and construction sites. At the same time, interns gained practical hands-on experience with construction planning, as well as on-site quality control and safety management.



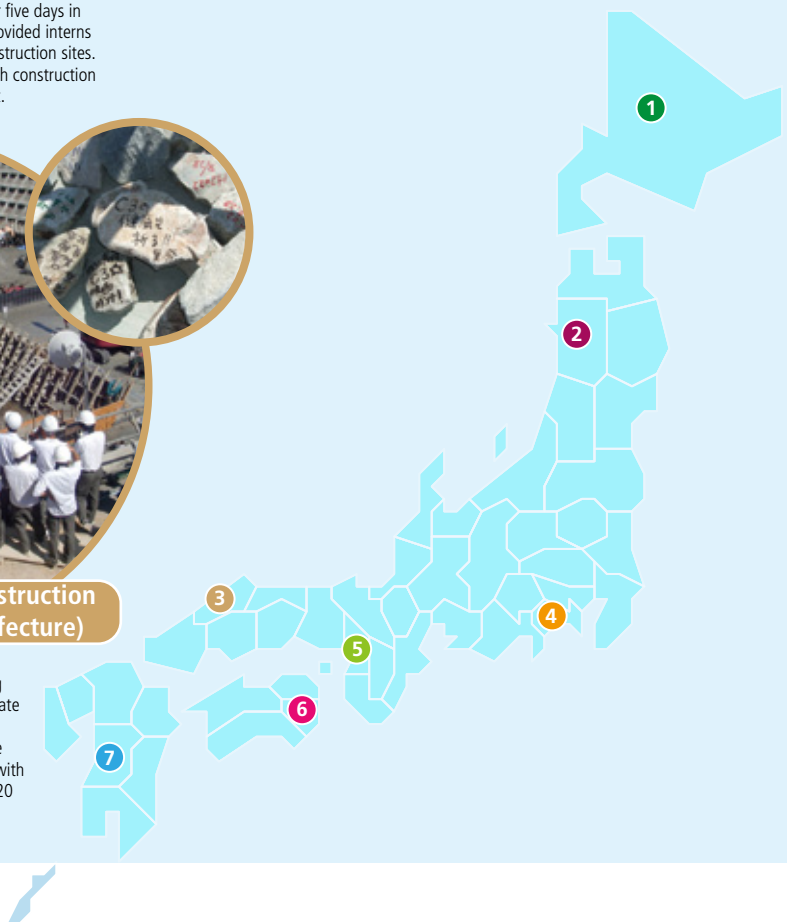
1 Tobetsu Dam Main Unit Joint Venture (Hokkaido Prefecture)

In July 2010, Kajima held a family dam tour targeting local elementary school students which attracted 44 participants. Since the start of the construction project, the site has hosted over 2,600 visitors on tours of the area.



3 Dai-ni Hamada Dam Main Unit Construction Joint Venture Project (Shimane Prefecture)

In September 2010, 45 students from the local Matsue College of Technology visited the construction site. During their visit, students wrote messages on a concrete aggregate which was made into a memorial stone, and observed firsthand the dam under construction. After the end of the tour, the students asked a number of different questions with genuine curiosity. This construction site hosted a total of 20 visits and 368 visitors in fiscal 2010.





Ensuring Compliance

Being a Company that People Are Proud to Work For

Providing Innovative Solutions for a Better Environment

Working Together with Local Communities

Communicating with Stakeholders

4 Construction of the New Machida City Hall Joint Venture (Tokyo Prefecture)

A family open house was held for elementary school students during the summer holidays in July 2010. After making paper models of the new city hall building, the families toured the actual site of construction, which also showcased eco initiatives taken on-site, and had a chance to touch and feel machinery, including cranes. Open house participants showed a strong interest in the project and expressed their intention to visit again when the construction had progressed to the next stage.



5 Osaka Kita Common Utility Duct Kadoma Construction Zone (Osaka Prefecture)

A 4-day long open house was hosted in November 2010 in conjunction with the Civil Engineering Day (*Doboku no Hi*) where a total of 240 fifth and sixth grade students from the local Neyagawa Municipal East Elementary School visited. After an introductory presentation on the construction project, the role of the duct and the structure of the shield machine, students were given a rare opportunity to see the actual work site, including a visit to the control room of the shield machine as well as a walk in the duct.



6 Tatsue Tunnel Construction Project (Tokushima Prefecture)

In July 2010, 31 seventh grade students from the local Tatsue Junior High School visited the construction site. Students were given a presentation on the purpose of the Shikoku Odan Expressway development project and work being done on the tunnel excavation project. Following this, students visited the actual construction zone and saw firsthand special heavy machinery and equipment. Impressed with the scale of the entire project, students soon found themselves visualizing the day of the tunnel's completion.



7 Mannichiyama Tunnel Joint Venture (Kumamoto Prefecture)

In May 2010, a total of 254 students ranging from the second to sixth grade from the local Kumamoto Municipal Ikegami Elementary School visited the construction site, which is part of the arterial road along the west side of Kumamoto station. The students walked around the construction site on a guided tour. After listening to the tour given by Kajima staff, students showed their interest in the construction site, to which they otherwise had no access, by expressing the following comments. "I want to go on this road in my family's car after it is completed," and "Although it takes no time at all to drive the road, now I understand the process from start to finish is really difficult."